

Wangaratta  
**Performing Arts &  
Convention Centre**



# **TECHNICAL SPECIFICATIONS**

## **Alpine MDF Theatre**

# Tech Specs

# Alpine MDF Theatre

## Table of Contents

Item	Pg	Item	Pg
<b>Who Are We?</b>	3	<b>Audio Visual</b>	
<b>Technical Information Overview</b>		35 Projector	18
1 Audio	4	36 Screens	18
2 Lighting	4	37 AV Equipment	18
3 AV (Audio Visual)	5	38 Cabling	18
4 Staging	5	<b>Backstage</b>	
5 Auditorium	5	39 Communications	18
<b>Stage Information</b>		40 Dressing Rooms	19
6 Stage Description	6	41 Laundry / Wardrobe	21
7 Staging Notes	6	42 Green Room	21
8 Stage Dimensions	6	43 Production Facilities	22
9 Stage Plot	7	44 Stage Door	22
10 Orchestra Pit	8	45 Orchestral	22
11 Drapery	8	46 Additional Rehearsal Spaces	22
12 Flying Facilities	8		
13 Hanging Plot	9	<b>Venue Plans</b>	
14 Access Equipment	9	47 Venue Plan	23
15 Loading Dock	10	48 Theatre Viewpoints	24
<b>Lighting</b>			
16 Positions	11		
17 Power	11		
18 Cabling	12		
19 Control	12		
20 Dimmer Racks & Distros	12		
21 House Lights	12		
22 Stage Luminaire	12		
23 Standard Lighting Rig	14		
<b>Audio</b>			
24 Control Positions	15		
25 Control & Amplification	15		
26 Speakers	15		
27 Playback	16		
28 Microphones	16		
29 Stands	16		
30 Other	16		
31 Line Patching	16		
32 Speaker Patching	17		
33 Cabling	17		
34 Audio Notes	17		

# Tech Specs

# Alpine MDF Theatre



## Who Are We?

Wangaratta Performing Arts & Convention Centre is located in heart of Wangaratta within an easy stroll to shopping, accommodation and restaurants. We are owned and operated by the Rural City of Wangaratta and are made up of a core team of 4 full time staff / 4 part time staff and a large pool of casual tech and front of house staff.

The **Alpine MDF Theatre** is the only "theatre" space at WPACC which holds up to 520 seats, with 364 in the Stalls and 156 in the Balcony. As a standard we remove 6 seats from the back of the stalls to run our tech desk and up to 3 seats are required for Ushers.

Back of house is made up of a large Green Room with kitchenette, six custom built dressing rooms that can accommodate a total of 34 people comfortably, and a Laundry with washing & ironing facilities.

We also have flat floor spaces in our venue used for Conferencing and Events, which are occasionally used for Cabaret style performance however these spaces are not acoustically designed for performance.

We have an on-site café (Intermezzo) which is independently run and operated, open 7 days a week, and open in the evenings for dinner when there is a performance on.

The Box Office is open 10am-4pm Monday to Friday and also open 1 hour prior to all ticketed performances. Tickets are also available online 24/7 at [www.wpacc.com.au](http://www.wpacc.com.au). All Ticketing is managed in house through our online platform Ticket Search. (We do not accept third party ticketing).

Parking for your production team is in our loading dock area, if you think you'll need more please discuss with our Technical Team Leader in advance.

### Venue Details:

#### **Wangaratta Performing Arts & Convention Centre**

33-37 Ford Street (Cnr Ford & Ovens Street) Wangaratta Vic 3677  
03 5722 8105 | [boxoffice@wangaratta.vic.gov.au](mailto:boxoffice@wangaratta.vic.gov.au)  
[www.wpacc.com.au](http://www.wpacc.com.au)

### Key Contacts:

#### **Ben Fletcher - Technical Team Leader**

03 5722 8130 – 0448 013 582  
[b.fletcher@wangaratta.vic.gov.au](mailto:b.fletcher@wangaratta.vic.gov.au)

#### **Tanya Camplin – Venue Manager**

03 5722 8115 – 0429 939 642  
[t.camplin@wangaratta.vic.gov.au](mailto:t.camplin@wangaratta.vic.gov.au)

#### **Allison Gillick – Box Office Team Leader**

03 5722 8107 – 0417 324 915  
[a.gillick@wangaratta.vic.gov.au](mailto:a.gillick@wangaratta.vic.gov.au)

### Stage Access

WPACC Stage Door and Loading Dock are located at the rear of the building accessed via Ford Street (opposite Big W). Access during bump-in / bump-out will be managed by the Theatre Duty Tech. There is also an internal Stage Door located in the Upper Foyer which can be unlocked for use on request.

# Tech Specs

# Alpine MDF Theatre

## Technical Information Overview

### 1. Audio

Our system is run through a Sound Web BSS BLU 102 signal processor

ITEM	DETAILS
Control Point	Rear stalls is our standard configuration – option B control room. Wireless available.
FOH Speakers	Nexo PS15 L&R
Balcony delay Fill	Nexo PS8 L&R
Stage side fill	6 x RCF 310A
DrumFill	2 x Meyer CQ1
Foldback	6 x Quest Passive Monitors (with amps) & 6 X RCF ART 310 –A Active Speaker 10" + 1"
Centrefill	2 x Quest QSA 200i Active Speakers
Sub Woofers	2 x RCF 8003-AS ii, 2200w, 18" Active Subwoofers.
Audio Console	Soundcraft Vi1000 96 Ch digital audio FOH console and 32/16 digital stage box
Audio Multicore	2 runs of shielded CAT6, 32 ch copper multicore and stage box (32 sends, 8 returns)
Comms	6 x comms packs and headsets and 1 master station (with headset) at SM console

### 2. Lighting

ITEM	DETAILS	QTY
Consoles	Road Hog 4, ETC Smartfade. Wireless available.	2 x DMX Universes
Dimmer Racks	Jands DMX 12 ch (2.4Kw)	9 x 12ch = 108 Total
Distro Racks	12 ch (2.4Kw)	2 x 12ch = 24ch total
Profiles	ETC Source Four 15/30(750w)-iris-	15
	ETC Source Four 23/50 (750w)-iris-	2
	Selecon Pacific 23/50 600w	4
	Selecon Axial 18/34 600w	12
Gobos & Holders	Various sizes – contact for details	
Fresnels	ETC Source Four Fresnel (750w)	18
	Selecon 1k (6 x RAMA, 2 x COMPACT6)	8
	Selecon Acclaim 650w Fresnel	12
CYC units	Selecon Aurora 4 cyc unit 1200w	4
	Selecon Aurora single unit 1200w	2
Par Cans	Kupo Pro Par 64 1k (MFL)	16
	Kupo Pro Par 56 300W (MFL)	12
LED Cans	Chauvet SlimPar Pro H (RGBAWUV)	16
	Showline SL 150 LED par (RGBW)	2
	Lighthechnic ProPar LED par (RGBAW)	4
Blinder Bars	ProShop Strip Blinder X *Additional Charges apply*	4
Followspot	Performer 1200w MSR Followspot *Additional Charges apply*	1
Strobe	ACME Megastrobe 5000 RGB *Additional Charges apply*	1
DMX Splitters	LSC DMX splitters – 1 @ dimmer gallery for LX bars (DMX B), 1 @ SM desk for Ground Rows (DMX B), 1 x floater.	3

# Tech Specs

# Alpine MDF Theatre

## 3. AV (Audio Visual)

### DETAILS

Panasonic PT-DZ770EK 7000 ANSI Lumens Front Project
Image size can be Full-Cyc or Drop-Down screen – both are 16:9
HDMI input from Prompt corner (SM Desk) or Mix Position. (via CAT6).
Roland V40-HD (Mixer/Scaler) can be supplied upon request
Acer 24" monitors (can be used as foldback monitors) x 2, Acer 21.5" monitor (preview monitor) x 1
HP Elitebook x360 G7 13.3" laptops x 2
Various cables (hdmi, cat, usb), AV senders and adaptors are available

## 4. Staging

ITEM	DETAILS
Stage Measurements	<b>9m deep x 10m width</b>
Wing Space	3 meters of wing space on PS & 3–7m on OP (piano store DS)
Setting line	1.63 meters from the front edge of stage (to upstage edge of proscenium)
Proscenium	Height is 6m and can be reduced from 10m to 6m wide
Stage Floor	4.5 kN = 450kg point load
Orchestra Pit	4.5 kN = 450kg point load – Suitable for up to 20 musicians
Loading Dock	95cm from ground. Roller Door is 4mx4m no lift, can back a truck up to Ramp access through standard size door
Ceiling Height	9m
Auditorium Access	Stair access to auditorium on both sides - JLG height 5.97m & can be driven on pit.
Lighting Bars	5 motorised LX bars on stage, 1 motor on orc bar- 150kg point load - 300kg uniformed distributed load
Hand Winches	10 Hand winches, 150kg point load - 300kg uniformed distributed load
Legs	4 Sets of legs, (7m drop) Fixed height on swivel
Risers	6 x SICO Stage Risers, 1.8m x 2.4m. 300mm or 600mm. Steps & Rails available.

## 5. Auditorium

The Alpine MDF Theatre auditorium consists of 520 seats total (365 seats & 154 balcony)

Our **Standard Configuration** is 6 seats removed to operate control position and up to 3 usher seats = **513**  
We also remove 2 seats to accommodate every 1 wheelchair sold

### Alternatives to Standard Configuration (fees apply / refer fees & charges)

1. Row AA has 19 non-permanent seats which can be removed to accommodate Orchestra Pit or Thrust up = 19 less seats to sell
2. Control Position on Row L can be relocated to Bio Box  
= 6 more seats to sell

# Tech Specs

## Alpine MDF Theatre

### 6. Stage Description

- Unraked stage with proscenium arch
- Plywood floor, screwing into surface permitted
- Stage crossover in hallway behind US Rear Wall
- Stage has been sprung
- Stage point load limit 4.5kn (450kg)

### 7. Staging Notes

- No access to PS dimmer gallery from stage
- No gallery on OP – not able to brail lines
- The obstruction on OP is a Piano storeroom which also has a small landing with stair access above it.
- All flown items must be rigged with rated equipment and is subject to approval by the Technical Team Leader.
- **WPACC does have some slings and shackles, must be prearranged to assure availability**
- **WPACC does not have any wire droppers**

### 8. Stage Dimensions

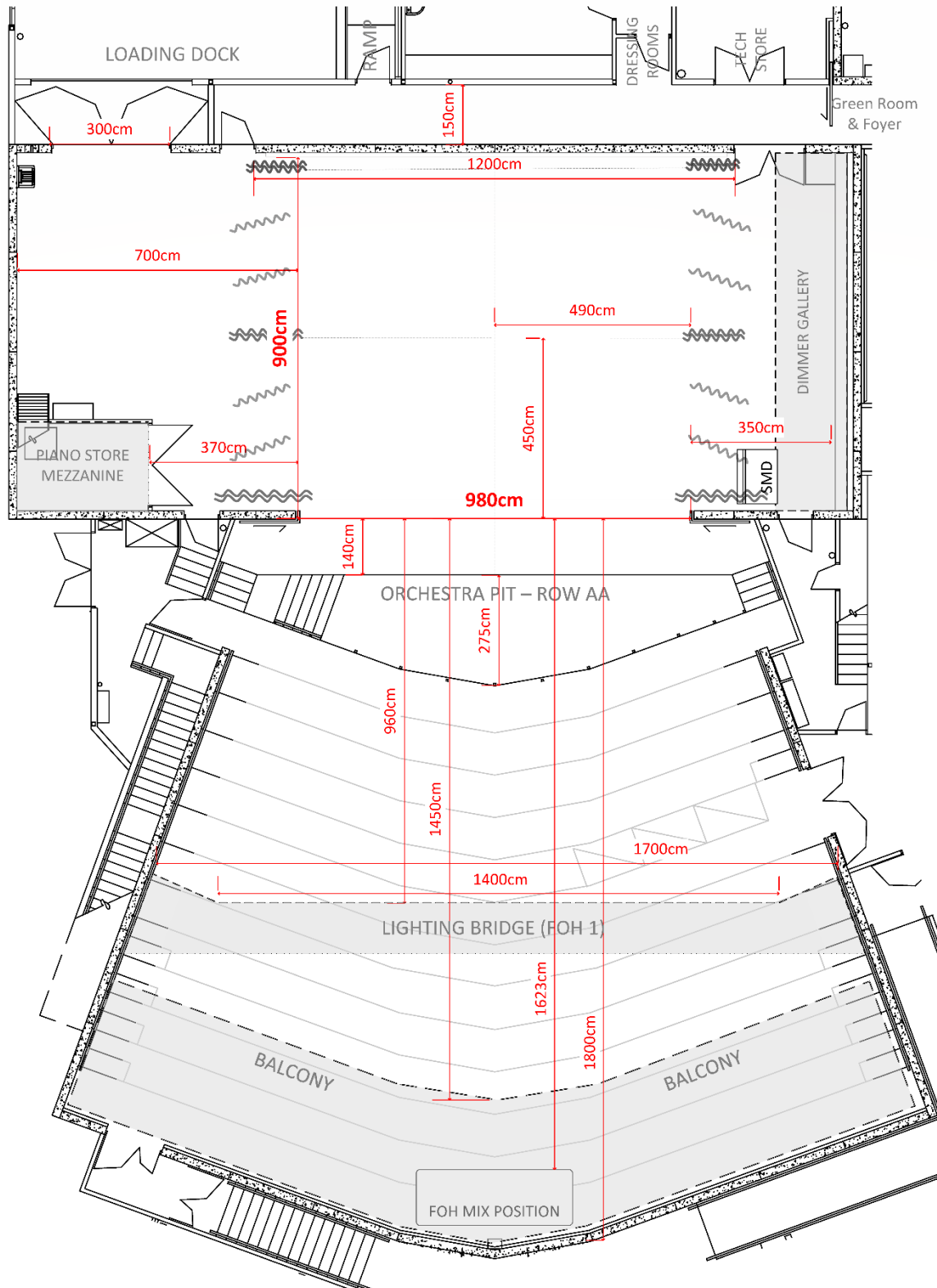
ITEM	DETAILS	
Proscenium	10m (Proscenium false walls can be used to reduce to 7m)	Width
	6m	Height
Setting Line	Setting line is located 1.63 m from front edge of stage when pit is down	
	US edge of proscenium – no fire curtain	
Distance from SL	SL to DS edge of stage	1.63m
	SL to DS edge of Orchestra Lift/Pit	4.3m at centre point (pit curves only 2.76 at sides)
	SL to first fly line	0.25m (House Curtain)
	SL to last upstage fly line	8.65m (Cyclorama)
	SL to rear wall	8.93m
	CL to OP wall (or obstruction)	8.80m (Obstruction DS 12.10m US)
	CL to PS wall (or obstruction)	8.65m
	Stage to underside of roof	9m
Overhead Obstructions	N/A	

(SL = Setting Line, CL = Centre Line)

# Tech Specs

## Alpine MDF Theatre

### 9. Stage Dimensions Diagram





# Tech Specs

## Alpine MDF Theatre

### 10. Orchestra Pit / Lift

- Orchestra Pit – No Lift
- Dimensions of the orchestra pit (usable area for orchestra): 9.5m x 2m
- Orchestra pit maximum capacity is 20 people
- The Orchestra Pit is covered with stage flooring sections and beams that require two crew to manually remove and takes about an hour. These can be set at stage level (Thrust Up), auditorium level (Standard Row AA), or pit floor level, (Orchestra Pit). **\*Additional Charges Apply\***

Orchestra Pit Configurations	THRUST UP	Stage level at 950mm above auditorium
	ORCHESTRA PIT OPEN	Orchestra pit level at 800mm below auditorium
	STANDARD PIT CLOSED	SWL of orchestra pit cover UDL 7.5kPa at Stage Level

### 11. Drapery

Type	Material	Colour	Width	Height	Quantity
House Curtain	Wool 100%	Black	6200	6200	2
Borders gathered	Wool 100%	Black	13	2500	3
Legs – Dead Hung	Wool 100%	Black	2500	6500	8
Mid Tab	Wool 100%	Black	8000	6500	2
Rear Tab	Wool 100%	Black	8000	6500	2
Cyclorama	Filled Cloth	White	11600	7000	1

### 12. Flying Facilities

#### Fly System

Combination of Hand Winches & Motor Winches –

**\*\*\* Not suitable for flying cloths as items can only be flown out 2m due to restrictive height of fly tower \*\*\***

Chain motors are located in the PS wings on allocated as Lighting Bars

**\*\*\* Not suitable for mid show moving due to noise and slow speed \*\*\***

ITEMS	DETAILS
Operating Position	PS at stage level
Total number of Lines	15
Panorama Lines	N/A
Batten Drift	batten - 8.2m - Lx bar 7.8m
Batten Type	48.3 x3.2 CHS Grade 350 or 48.3 x 2.3 CHS grade 450 'DuraGal'
Batten Length	12m
Batten Extensions	N/A
Batten Pick-ups	(5) Pick-ups 1 @ centre, then 2.5m, then 2.8m
Batten Point Load	150kg (1.5kN)
Batten W.L.L.	300kg UDL (Uniformly Distributed Load) (3.0kN)
LX bars can be swung	No
Fly bars can be swung	No

**\*\*\* WPACC does not have a fly tower and is unable to fly in cloths/set pieces during performances \*\*\***



# Tech Specs

## Alpine MDF Theatre

### 13. Hanging Plot

Line #	Distance from SL	Line Type	W.L..L	Venue Allocation
ORCHESTRA BAR		MW	300kg	No focus access unless pit lid is on bounce focus otherwise
1	150	HW	300kg	House Curtain – French action motorised
2	700	MW	300kg	Lx 1 and Border
3	1300	HW	300kg	Spare line
	1750			Legs 1 – Dead Hung (Short pipes not stage width)
4	2200	HW	300kg	Border
5	2750	MW	300kg	Lx 2
	3200			Legs 2 –Dead Hung (Short pipes not stage width)
6	3500	HW	300kg	Border & Drop-Down Projection Screen, Meyer CQ1's
7	4400	HW	300kg	Border
8	4600	HW	300kg	Mid Stage Traveller
9	5000	MW	300kg	Lx 3
	5700			Legs 3 – Dead Hung (Short pipes not stage width)
10	6200	MW	300kg	Lx 4 – par cans
	6700			Legs 4 – Dead Hung (Short pipes not stage width)
11	7100	HW	300kg	Border
12	7600	MW	300kg	Lx 5 -cyc units
13	7900	HW	300kg	Spare line
14	8200	HW	300kg	Rear Traveller
15	8650	HW	300kg	Cyclorama
	8930			Back wall

(SL = Setting Line, MW = Motor Winch, HW = Hand Winch, WLL = Maximum distributed load including bar weight)

### 14. Access Equipment

#### Elevated Work Platform

JLG 20MVL, drive around vertical lift - weight 1 tonne 300kg point load, max reach 5.97m Platform Height  
EWP operators must be deemed competent by Technical Team Leader.

#### Ladders

- 1 x 3.8m Extension Fibreglass ladder (6.64m extended) with hooks for FOH perch position
- 1 x 6ft Step Ladder – fibreglass
- 1 x Branach ladder 3m – Fibre glass with platform, handrail, and wheel kit
- 1 x Modular A-Frame – 5m – 10m

#### Staging Units

6 x SICO South Pacific 1800 Series, 2.44m x 1.83m x 300mm or 600mm (adjustable legs for the two heights)  
Accessories: 4 handrails, 2 steps/treads with rails, 2 steps without, and black masking skirts.

#### Stage Traps

10 x traps locations available – down stage centre x 2, front edge of stage (ps & op), prompt side x 3 (us, ms & ds), off prompt x 3 (us, ms + dsc)

#### Safety Curtain

No Safety Curtain installed

# Tech Specs

## Alpine MDF Theatre

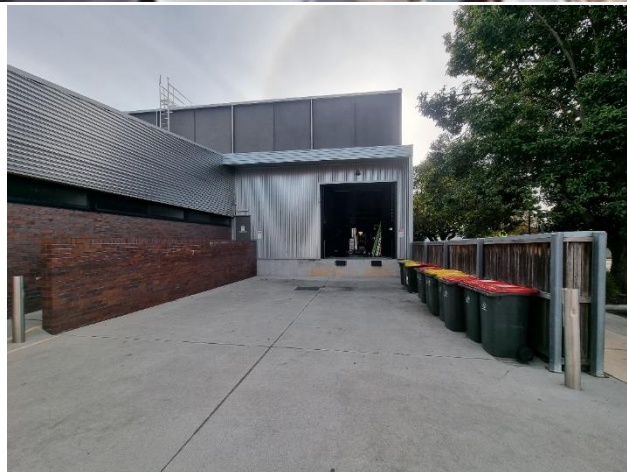
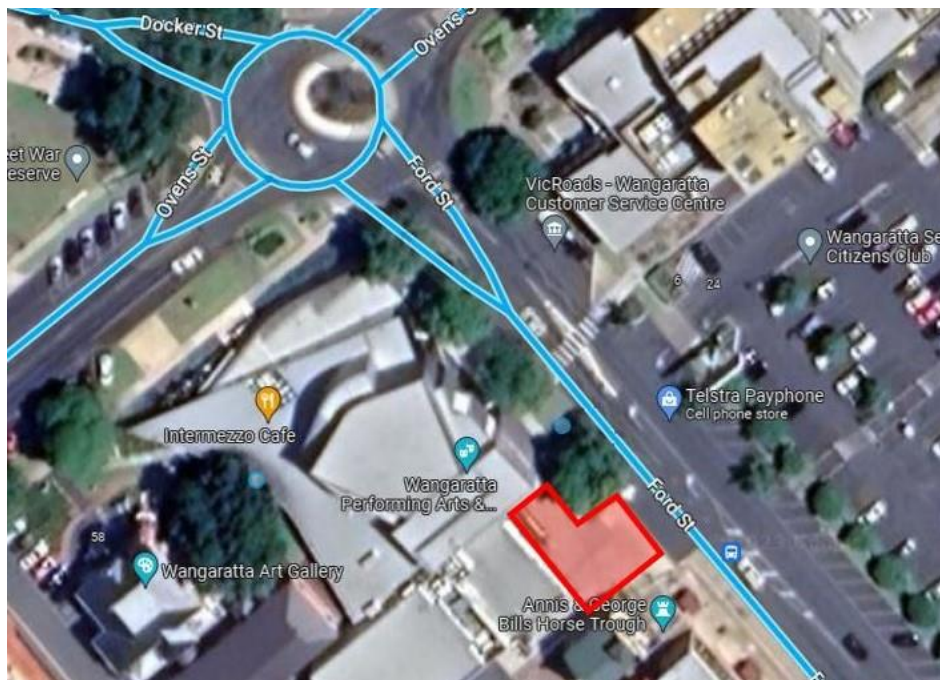
### 15. Loading Dock

#### Access

- Trucks are able to reverse up to loading dock, which is parallel to Ford Street (opposite Big W).
- Access to dock is off Ford Street. Driveway is slightly raked down towards dock.
- Wheelchair ramp leads to backstage from dock - single door access only.
- Loading Dock Height From ground .95m
- Loading Dock Door Dimensions 4m High x 4m Wide

#### Large Semi Trailers

Large Semi's will need to come from Ovens Street onto Ford Street and pull in front of the museum, which is located behind the theatre and then back into loading dock



# Tech Specs

# Alpine MDF Theatre

## Lighting

### 16. Positions

WPACC Standard Lighting Rig is included in your venue hire.

If a Show-Specific Pre-rig is required, please contact our Technical Team Leader to discuss requirements.

**\*Additional Charges Apply\***

#### FOH Bridge #1

- Setting Line to lighting bar 13m, 41° - Usable bar width 14m
- 18 patch points, + 6-way Weiland loom.
- Rigging line, Harness & Fall Arrest System for High Risk Works
- Safe Working at Heights Qualification required for high-risk works

#### FOH Perches (PS & OP) – DMX available

- Setting Line to FOH Perch 3.93m (distance to the lowest point of perch)
- Maximum fixtures per perch – 6, (150kg total)
- 3.8m extension ladder, with safe hooks.

#### Balcony Bar – No DMX available

- 6 x Patch points, Stage Relay camera & projector box.
- Extension ladder with safety hooks, no focus platform.

#### Orchestra Bar FOH #2

- 18 x Patch points
- 4250mm from set line. (Bump focus only, accessible via EWP only when thrust is at stage level.)

#### Stage LX Bars 1-5

- 18 x Patch points, DMX & GPO to all Motorised Bars.
- Bar height 5 – 8m. Standard 7m Trim.
- Borders and Masking, Spares available.
- No Panoramic Bars.

#### Additional Rigging Notes

- There are beams in the ceiling above stage that are suitable for slinging spansets or attaching beam clamps for static circus rigging.
- Beams run from DS to US - not across stage.  
**Venue EWP does not have the elevation to access these beams as they are 9m from the stage.**
- If you need to rig from these beams you will need to hire in an EWP that has >8m elevation and a point load of less than 4.5 Kn (450Kg) per point.

## 17. Power

#### 3 Phase Outlets:

- 4 on PS (dimmer room, 40A, Five Pin), 4 on stage (one in each corner, 40A five pin), -
- 5 on PS gallery above stage – Dimmer Racks (40A, five pin)

# Tech Specs

# Alpine MDF Theatre

## 18. Cabling

WPACC has a stock of black 240v ext. leads, PowerCon, 5-Pin DMX and adaptors, 3-Pin and Adaptors, 3phase and some 6-way Weiland cable (with headers + tails) available. If a QTY of leads or looms are required, please contact Technical Team Leader.

## 19. Control

ITEM	DESCRIPTION
Lighting desk	Road Hog 4 + ETC Smartfade
Control channels	HOG 4 (4 Universes) and/or Smartfade 96 Channels
Signal output	DMX512
Stream A	Control room - dimmer room (3) - dimmer gallery (4)
Stream B	Control room – lighting bridge (1) – stage PS (1), OP (1), USOP (1) + USPS (1)
<ul style="list-style-type: none"> <li>1 x DMX splitter (B) located at Dimmer gallery - one run of DMX to each LX bar,</li> <li>1 x DMX splitter (B) located at SM desk, 1 x floater</li> <li>Control line: From PS to control room</li> </ul> <p>Can operate console from control room (bio box), prompt side of stage, production seats in middle of stalls or rear stalls mix position. Wireless Control Available via Touch OSC &amp; Visi-Remote.</p>	

## 20. Dimmer Racks & Distros

ITEM	DESCRIPTION
Total Dimmers	9 x 12 ch @ 2.4kw per dimmer = 108 (no 5Kw dimmers available)
Dimmer Locations	3 racks for FOH 5 Racks on dimmer gallery for lighting bars 1 Floating
Total Distros	2 x 12 ch. 10amp 240v

## 21. House Lights

ITEM	DESCRIPTION
Control Positions	Stage Left Prompt Corner at SM Desk, and Mix Position in the Auditorium.
Fade time	12secs per step, 0%, 25%, 50%, 75%, FULL – Note house lights are dimmable LED tubes. Performance HLX (650w Fresnels) are controllable via DMX. <b>NOTE: Performance HLX not suitable for entry/exit alone</b>

## 22. Stage Luminaire

### Profiles

Make	Model	Angle	Detail / Accessories	Watt	Total
Selecon	Zoomspot Axial	18° - 34°	Gel Frames, some gobo holders available	600 w	12
Selecon	Zoomspot Pacific	23° - 50°	4 M size Gobo Holders, Gel frames	600 w	5
ETC	Source 4 Zoom	15° - 30°	Gel frames, gobo holders, top hats, 6 x S4 Iris	750w	15
ETC	Source 4 Zoom	23° - 50°	Gel Frames, gobo holders	750w	2

# Tech Specs

## Alpine MDF Theatre

### Fresnel's

Make	Model	Detail / Accessories	Watt	Total
Selecon	Compact	Barndoors, Gel Frames	1000w	2
Selecon	Acclaim	Barndoors, Gel Frames	650 w	12
Selecon	Rama	Barndoors, Gel Frames	1000w	6
ETC	Source 4 Fresnel	Barndoors, Gel Frames	750w	18

### Par Cans

Make	Model	Angle	Detail / Accessories	Watt	Total
Kupo Pro	Par 64	MFL	Gel frame and safety chain	1000w	16
Kupo Pro	Par 56	MFL	Gel frame and safety chain	300w	12

### Flood/Cyc

Make	Model	Detail / Accessories	Watt	Total
Selecon	Aurora	1 cell per unit, 1 Gel Frame per unit	1000w	2
Selecon	Aurora	4 cells per unit, 4 Gel Frames per unit	1000w	4

### LED

Make	Model	Detail / Accessories	Watt	Total
Chauvet	SlimPar Pro H-USB	RGBAW + UV, 5, 8, 12ch modes, 4 x 4 Top Wash		16
Showline	SL 150 zoom LED Can RGBW	Located on OP and PS perches, 8 + 16ch modes		2
Lighttechnic	ProPar LED Can RGBAW	Standard LED par cans. No fixed position.		4

### Smoke/Haze \*Additional Charges apply\*

Make	Model	DMX	Details	Power	QTY
Antari	F-2 Fazer	YES	Haze Machines. Flown PS & OP, Stage corners or wings.	240v	2
Martin	GEM ZR-35	YES	Smoke Machine, Location as required.	240v	1

### Other \*Additional Charges apply\*

Item	Make	Model	Detail / Accessories	Power	Total
Mirror Ball		20inch	20in diameter ball with motor	240v	1
Followspot	Performer	1200w	MSR, with sight, located at Bio Box	240v	1
Blinder Bar	ProShop	Strip Blinder X	10 cells per unit @75w per cell blinder bar	750w	4
Strobe Light	ACME	MegaStrobe 5000	RGB LED Strobe unit. DMX Controlled.	240v	1

### Patching:

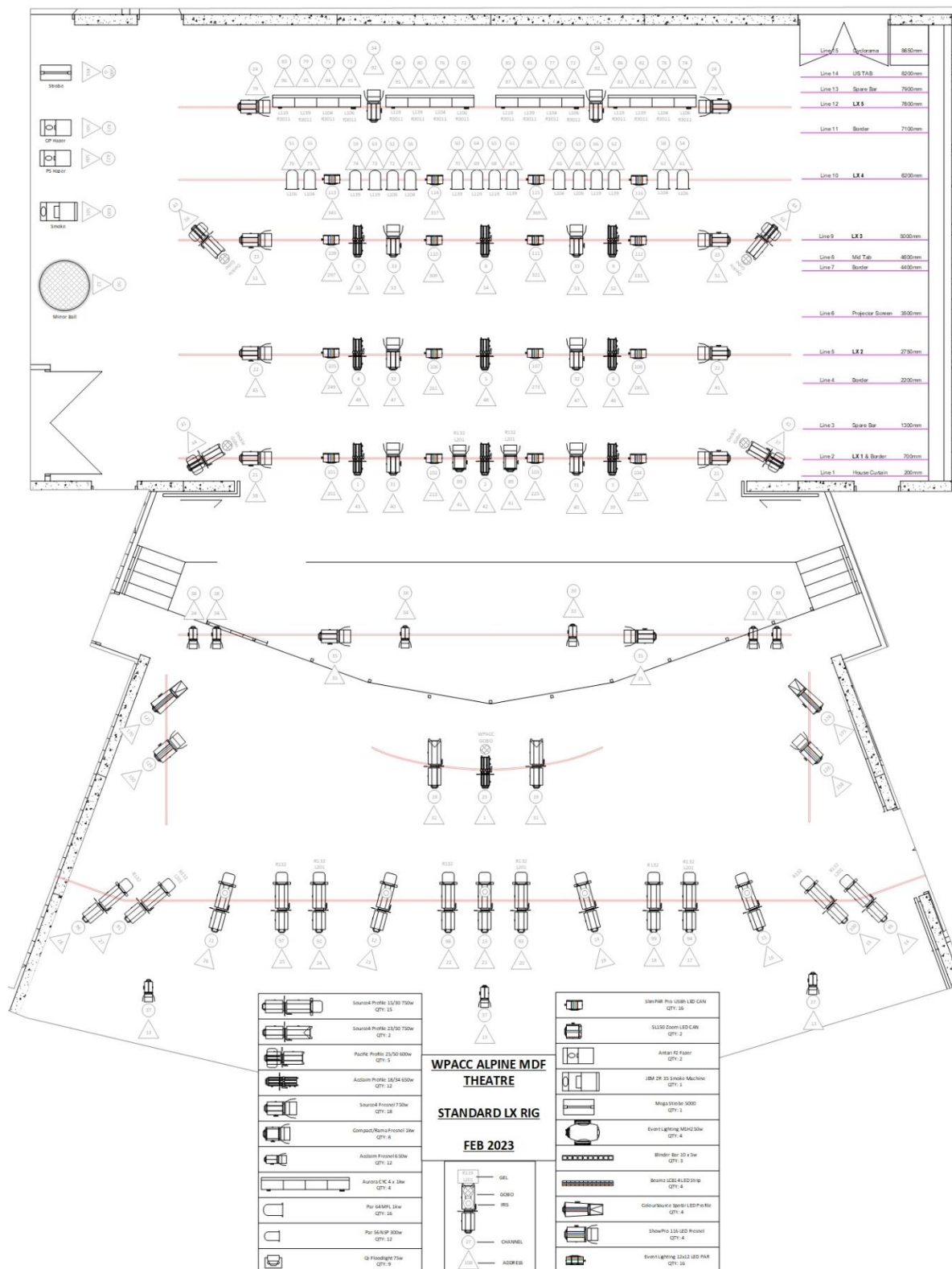
Location	Quantity	Numbering (PS to OP)	Detail / Accessories
Bridge (FOH#1)	18	1-18	Installed patch to dimmer room – rack 2. DMX, 240v
Dress Circle (Balcony)	6	1-6	Installed patch to dimmer room – rack 2. No DMX
Box Boom PS	6	1-6	Installed patch to dimmer room – rack 3. DMX, 240v
Box Boom OP	6	1-6	Installed patch to dimmer room – rack 3. DMX, 240v
Orchestra Bar (FOH#2)	1-18	1-18	Installed patch to dimmer room – rack 3. DMX, 240v
LX 1	18	1-18	Separate looms to dimmer gallery – rack 4. DMX, 240v
LX 2	18	1-18	Separate looms to dimmer gallery – rack 5. DMX, 240v
LX 3	18	1-18	Separate looms to dimmer gallery – rack 6. DMX, 240v
LX 4	4 x 5	R,G,B,A	4 X 5WAY Weiland Looms, - rack 7. DMX, 240v. HAND WINCH
LX 5	18	1-18	Separate looms to dimmer gallery – rack 8. DMX, 240v
Floor patches	8	R,G,B,A	4 DSPS and 4 USPS (looms to gallery), cross to OP via Traps. 8 x H stands and 4 x booms & bases with 6 or 10 ft pipes.



# Tech Specs

## Alpine MDF Theatre

### 23. Standard Lighting Rig



# Tech Specs

# Alpine MDF Theatre

## Audio

### 24. Control Positions

#### Rear Auditorium – Standard

- Located at centre of Stalls - Rows L and M (last rows at rear of auditorium) Beneath Balcony.
- House console uses digital stagebox over Cat 6. Wireless available via Visi-Remote.
- 2 x shielded CAT6 to PS, 1 x shielded CAT 6 to OP, 2 x data points (CAT5e) to PS
- 1 x 32 CH copper multicore with stagebox to PS (24 sends, 8 returns)

#### Relocate to Control Room/Bio Box – Please discuss with Technical Team Leader

Rear centre of balcony – removable windows. **\*Additional Charges Apply\***

#### Relocate to Prompt Side of Stage. – Please discuss with Technical Team Leader

Next to Stage Managers console

### 25. Control & Amplification

#### Primary Mixer (located rear stalls or control room)

Soundcraft Vi1000 96 Channel Digital Console.

#### Secondary Mixer (available on request)

Soundcraft SiCompact – 32 Ch Digital console.

Soundcraft Ui16 digital console – Ipad Control.

Allen & Heath GL2400/24 - 24 ch, 6 AUX, 4 Sub analogue mixer.

Soundcraft EPM6, MFXi8, or MFXi12 used for small events side stage.

#### Amplifiers

CAMCO 2 CH POWER AMPLIFIER 2 X 1900w @ 4 OHMS for PS15 and PS8

QSC GX5 – 3 x 2 CH, 500w @ 8 OHMS for Quest monitors.

#### EQ – Soundcraft Vi1000 comes inbuilt with Graphics

(1) DBX 1231, stereo 31 Band Graphic EQ, 15db cut or boost

(1) DBX 1231, stereo 31 Band Graphic EQ, 15db cut or boost

#### FX - Soundcraft Vi1000 comes inbuilt with Effects

Lexicon MX400, 4 channel FX processor

#### Compression / Limiter / Gates – inbuilt in Soundcraft Vi1000

Inbuilt Compressors/Limiters/Gates/RVB

### 26. Speakers

#### FOH Speakers

2 x Nexo PS15 - Front of House, (L & R)

2 x Nexo PS8 - Balcony Delays, (L&R)

2 x RCF 8003-ASII 18" Active Subwoofers (L&R)

#### Foldback

2 x Meyer CQ1 – active speakers, FOH, Sidefill or Drum Fill

6 x Quest Monitors QM 12DC – 4 x 12" + 1" 300w, 2 x 12" + 1" 400w

6 x RCF ART310-A, active speakers - 10" + 1" 350W

2 x Quest QM 200i active speakers – 8" + 3/4" 150W – also used as centre-fill



# Tech Specs

## Alpine MDF Theatre

### 27. Playback

Item	Make	Model	Detail	Total
Laptop	HP	EliteBook X360	Digital Media, USB. No CD Drive.	1
CD Player	Stanton C500		Twin cd player	1
CD player MP3 Recorder	TASCAM	SS-CDR200	Record in MP3, Audio CD, Covert WAV to audio CD – To USB, CD_RW Play CDs	1

### 28. Microphones

Make	Model	Detail / Accessories	Use	Total
SHURE	SM58		Vocals	6
SHURE	SM57		Instrument mic	8
SHURE	ULX	Wireless Microphone	Hand held or lapel	3
SHURE(6 X Receivers)	ULXD 2	6 Lapel/Headset Transmitters or 6 Handhelds	Conference/Musical or Vocal	6/6
Audio Technica	AT4041	Clip and pop shield	Chorus Mics	2
Line Audio	CM3	Clip and pop shield	Instrument/church/ etc mics	4
ADK	S-51	Clip	For guitars, bass cabs, winds and string instruments	2
Shure	Beta 52a		Kick drum	1
Sennheiser	901		Condenser plate mic for kick drum and piano	1
Sennheiser	904	Clip	Drum mic for toms and snare	3
DPA	4099	Clip	Piano mic	2

### 29. Stands

Item	Model	Detail / Accessories	Total
Telescopic Microphone stand	K&M	Tall With boom arm(Silver/black/grey)	16
Telescopic short Mic stand	K&M	SHORT	8
Adjustable Music Stand	K&M	With 6 x Sconce Lights	6
Straight Stands	K&M	Round base straight stands	4

### 30. Other

Item	Model	Detail / Accessories	Total
DI	Triton Big Amp	DI – Single Channel	2
DI	Behringer Di 100	Single Channel Active DI	8
DI	Radial USB	USB DI to 2 x XLR	1
DI	LA AUDIO DI2	DI – Single Channel	3
DTBI	LA AUDIO DBT plus	Dual Transformer Balancing Interface	2
DTI	ARTcessories DTI	Dual Transformer/Isolator	4

### 31. Line Patching

Location	Quantity	Numbering	Detail
DSOP Corner	12	Panel C 1-10 C-A&B	10 send, 2 returns
Prompt Corner	12	Panel B 1- 10 B A&B	10 send, 2 returns
Forestage Dip Trap	12	Panel A 1-10 A A&B	10 send, 2 returns
Orchestra Pit OP	12	Panel 1-10	10 send, 2 returns
Orchestra Pit PS	12	Panel 1-10	10 send, 2 returns
Lectern Dip Trap	1	Panel G	1 Send
Stage Managers Desk	1	SM panel	1 Send
House Mixing Position	7	Panel F 1-3 1-4	3 sends, 4 returns Comms Data x2
			CAT 6 x2 to PS, CAT6 x 1 to OP

# Tech Specs

## Alpine MDF Theatre

### 32. Speaker Patching

Location	Quantity	Numbering	Detail
FOH L&R and Balcony delay		n/a	All speakers patched through Sound Web, access points in control room, Prompts side and rear stalls
SUB output			Located in control room and can be patched to side of stage - goes through Sound Web and is crossed over
Note there are additional rigging point both P and OP in front of proscenium with access via EWP if you want to fly a line array – there are also centre rigging points for a centre cluster.			

### 33. Cabling

WPACC has a stock of black 240v ext. leads, black powerboards, multiple stage drop boxes, and various lengths of XLR cables and adaptors available. We also carry a small variety of TRS, 3.5mm, RCA and other connectors and adaptors.

### 34. Audio Notes

- There is a 200mm cable pipe that run from control room to back of stalls mixing position. Cable pipe also runs from rear of stalls mixing position into the Pit wall- can only be used if orchestra pit is out.
- Any additional equipment required will need to be hired in advance. Please discuss requirements with our Technical Team Leader. **\*Additional Charges Apply\***

**Please note** - WPACC observes and enforces WorkSafe compliance code - Noise Exposure Guidelines OH+S regulations 2019. Hearing Protection is available for all audience, staff, and performers on request.

The noise exposure standard is an 8-hour average of 85dB(A) and a peak noise level of 140dB(C).																
Exposure Level (dBA)	85	88	91	94	97	100	103	106	109	112	115	118	121	124	127	130
Max Exposure Time	8 hrs	4 hrs	2 hrs	1 hrs	30 min	15 min	7.5 min	3.8 min	1.9 min	57 sec	28.5 sec	14.3 sec	7.1 sec	3.6 sec	1.8 sec	0.9 sec

It is recommended that audio levels in the Alpine MDF Theatre do not exceed peaks of over 104-106dB(C). Please be considerate of the proximity of our front rows to Subs and PA, and the safety and comfort of our audience, performers, and staff.

**For More Information:**

[Noise | WorkSafe Victoria](#)

[Compliance code: Noise | WorkSafe Victoria](#)

[Occupational Health and Safety Regulations 2017 \(legislation.vic.gov.au\) Part 3.2](#)

# Tech Specs

## Alpine MDF Theatre

### 35. Projector

#### Projection location

FOH Projection box is in-built into dress circle, lower centre of balcony fascia. Accessible from the balcony walkway.

**Projector can be operated from control room, side of stage, rear of stalls or on stage.**

Type	Model	Detail / Accessories
Panasonic	PT- DZ770EK	7000l Lumens – HDMI/DVI/VGA (Fixed Position)

### 36. Screens

- Cyc (Full Cyclorama) (16:9 aspect ratio)
- Drop down screen rigged from fly line 6 (can be relocated – contact Technical Team Leader to discuss). Screen dimension – 4308 x 2692mm (16:9 aspect ratio)

\*\*\* When designing PowerPoint presentations please ensure that minimum font size is 24, and that a sans-serif type font (such as Verdana or Helvetica) is used. Black slides to douse image\*\*\*

### 37. AV Equipment

Item	Model	Detail / Accessories	Total
HDMI Sender		HDMI over Cat 5	<b>3 Pairs</b>
HDMI Splitters		1 input, 2 outputs	<b>2</b>
Roland Video Mixer	V40 HD	Accepts 4 HDMI/4 VGA/4 Composite	<b>1</b>
Acer 21.5" monitor	KA220HQ	HDMI, VGA, DVI inputs – used as preview monitor for Roland	<b>1</b>
Acer 24" monitor	KA240H	HDMI, VGA, DVI inputs – used as foldback monitors	<b>2</b>
HP Elitebook Laptop	X360 G7	13.3", 2 x USB 3.1 type C, 2 x USB 3.1 Gen 1, 1 x HDMI 1.4b, 1 x headphone/mic combo	<b>2</b>

### 38. Cabling

WPACC stocks various lengths of HDMI, Cat and USB cables, as well as a variety of AV senders and adaptors, **Please contact the Technical Team Leader** to discuss connectivity.

## Backstage

### 39. Communications

#### Stage Managers Console

Stage Managers desk is located at prompt corner. The desk cannot be moved from this area and is fitted with a light, comms base station and back of house paging microphone.

#### Talkback

Master Unit	Clearcom running two common loops
Sub stations	6 total – Jands E-100 EZICOM belt backs and SM console master station
headsets	6 Belden Headsets (single muff)

# Tech Specs

## Alpine MDF Theatre

Radio Units In-house N/A  
Talkback patching location: Control room (follow spots in control room)  
DS PS Stage DSOP Stage  
Technical office Crew Room  
Green room  
Production desk in auditorium  
Rear auditorium audio mixing position  
FOH Bridge Dimmer Gallery  
Orchestra Pit

### Paging / Show relay

Paging to the dressing rooms is available from the stage manager's desk. Show relay is distributed to all dressing rooms and green room. Each room has an individual volume control.

### Stage Monitor

Prompt Corner & Green Room.

## 40. Dressing Rooms (refer page 20 for layout)

Dressing Room	Capacity	Details
Dressing Rm #1	12	Contains one sink, mirrors, and makeup lights – 12 chairs
Dressing Rm #2	12	Contains one sink, mirrors, and makeup lights – 12 chairs
Dressing Rm #3	4	Contains one sink, mirrors, and makeup lights – 4 chairs
Dressing Rm #4	4	Contains one sink, mirrors, and makeup lights – 4 chairs
Dressing Rm #5	2	Contains one sink, mirrors and makeup lights – 2 chairs
Dressing Rm #6	2	Contains one sink, mirrors and makeup lights – 2 chairs Dressing room 5 and 6 share an ensuite shower and toilet

Other dressing rooms share Male and Female Toilet block with single shower in each.  
Please note that during several months of the year the two smaller dressing rooms may be used for storage.  
**Please check with management if you require all 6 rooms prior to arrival**



**WPACC DRESSING  
ROOM 1&2**  
(identical / seat 12  
each)

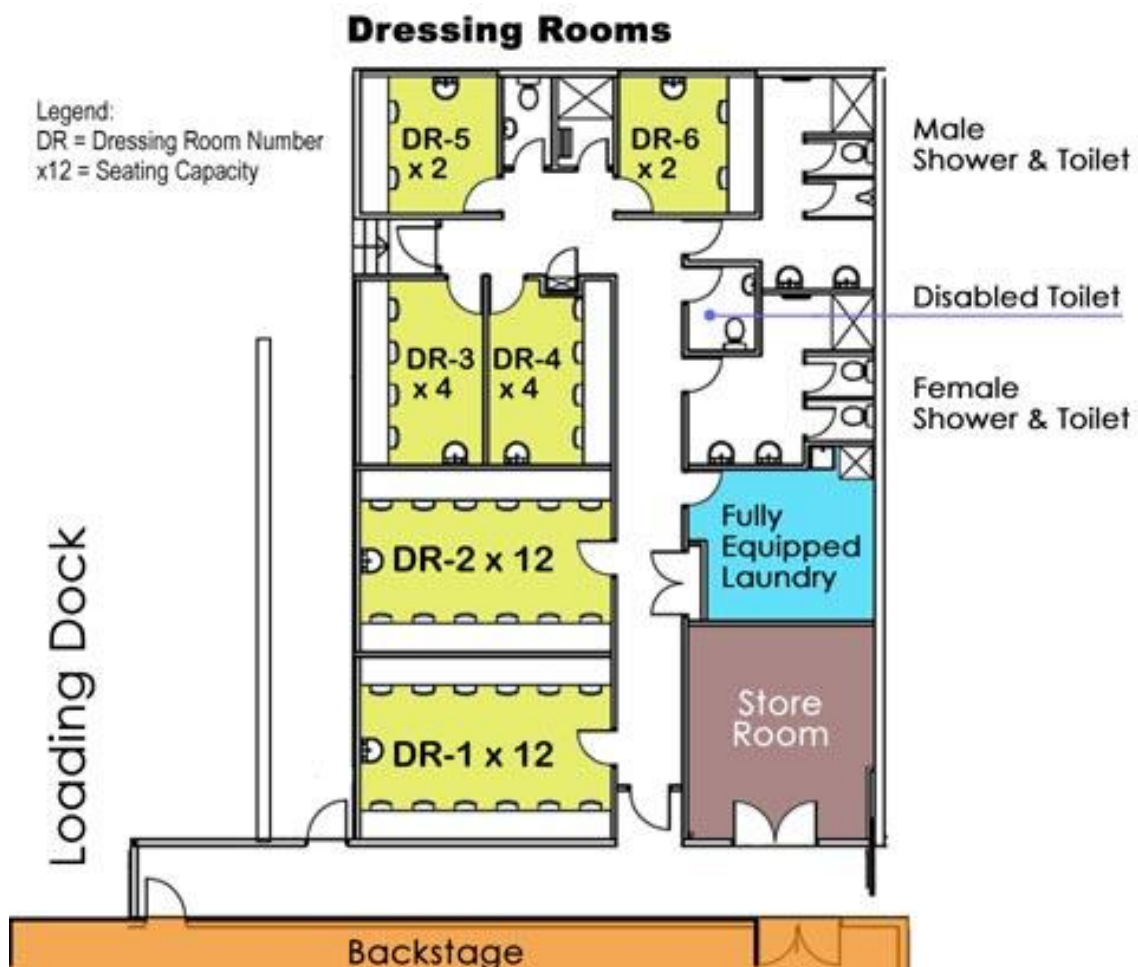
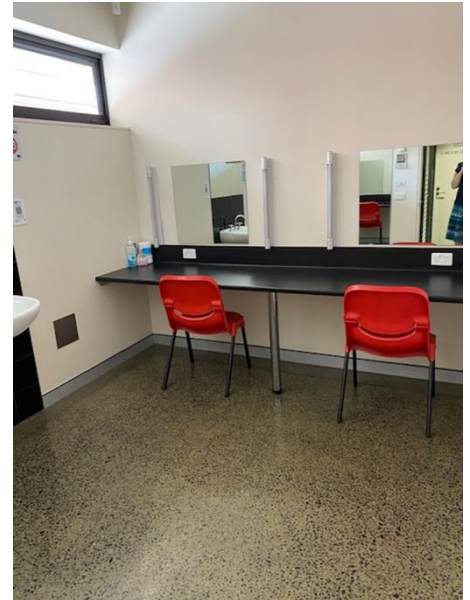
# Tech Specs

## Alpine MDF Theatre



← **WPACC DRESSING ROOM 3&4**  
(identical / seat 4 each)

**WPACC DRESSING ROOM 5&6** →  
(identical / seat 2 each)





# Tech Specs

## Alpine MDF Theatre

### 41. Laundry / Wardrobe

Washing Machine	1
Dryers	1
Iron / ironing board	1
Clothes racks	6



### 42. Green Room

#### Kitchenette, including –

- Tea / Coffee facilities
- Fridge / freezer
- Microwave
- Running water with filter fitted to cold tap for drinking water

#### Other fit out

- One wall of mirrors & Ballet Bars
- Sound Proofing
- Tables / Chairs
- Couches
- Monitor from stage / live feed
- Makes a great meeting space



# Tech Specs

# Alpine MDF Theatre



## 43. Production Facilities

### **Production Desk**

A production desk can be setup in the cross over in the middle of the auditorium.

### **Production Office**

Yes (or Green Room/dressing room can be used)

### **WIFI**

WPACC has free WIFI Internet access throughout the venue (RCOW Guest – No Password).

## 44. Stage Door

**Access** -A single width Stage Door is located at the loading dock on Ford St via Ramp. Access during bump-in / out will be controlled by the Duty Technician. There is an internal Stage Door located in the Upper Foyer, this can be unlocked for use upon request.

## 45. Orchestral

### **Steinway Concert Grand Piano**

Tuning to be arranged prior to use. Use must be approved by Management.

Several audio specific power outlets located in the pit, on stage and various other locations around the building.

WPACC can provide 5 music stands (5 scone lights available)

## 46. Additional Rehearsal Spaces (can be booked/ fees apply)

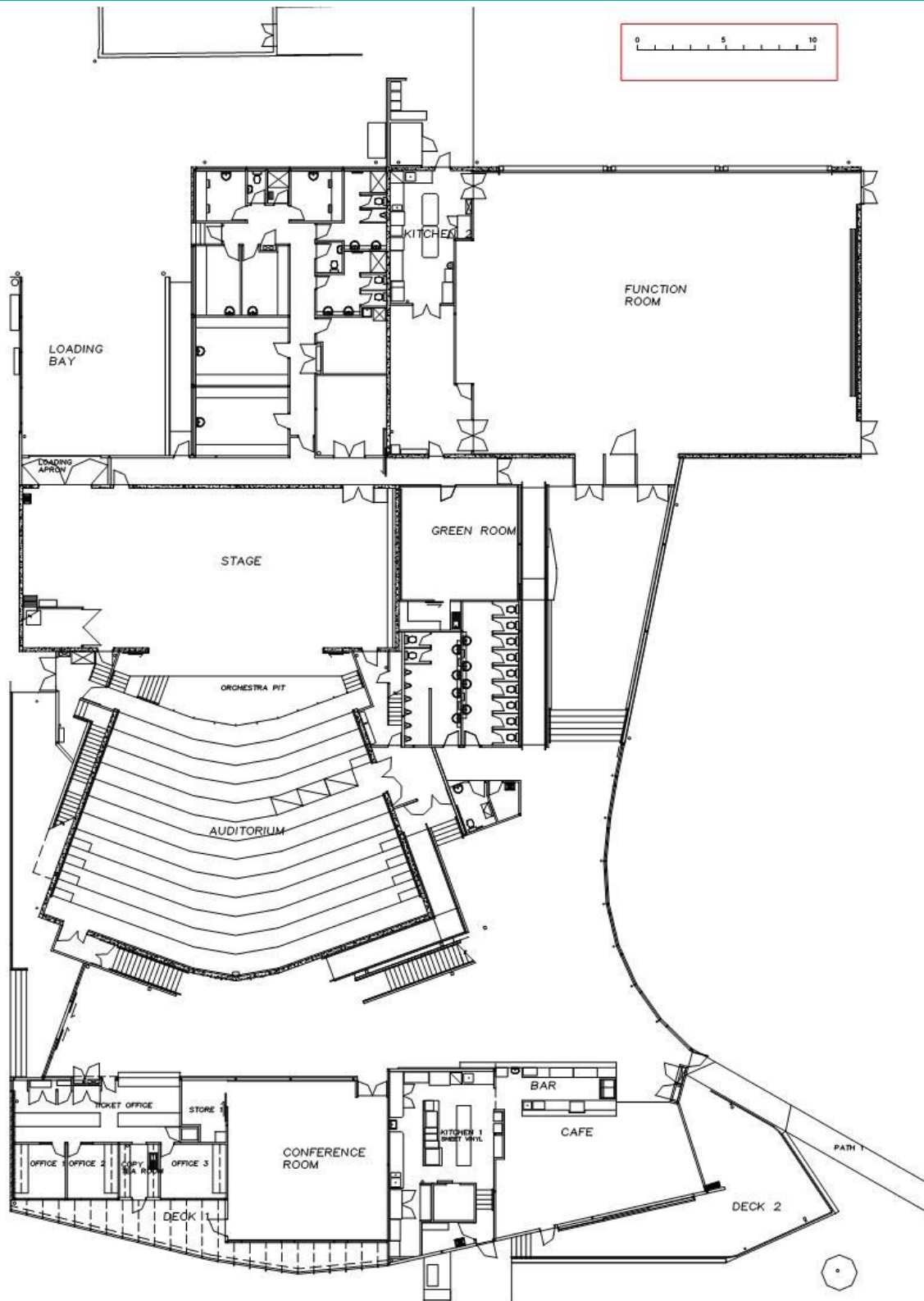
<b>Memorial Hall</b>	Flat floor space / polished timber floors (21.8m x 15.84m)
<b>Memorial Hall A</b>	Flat floor space / polished timber floors (8.13m x 15.84m)
<b>Memorial Hall B</b>	Flat floor space / polished timber floors (13.67m x 15.84m)
<b>Conference Rm</b>	Flat floor space / carpeted (9.01m x 9.05m)



# Tech Specs

## Alpine MDF Theatre

### 47. Venue Plan



# Tech Specs

## Alpine MDF Theatre

### 48. Alpine MDF Theatre Viewpoints



View from Balcony



View from Stage



FOH Ops Position



View from FOH Ops